

BOCCHI®

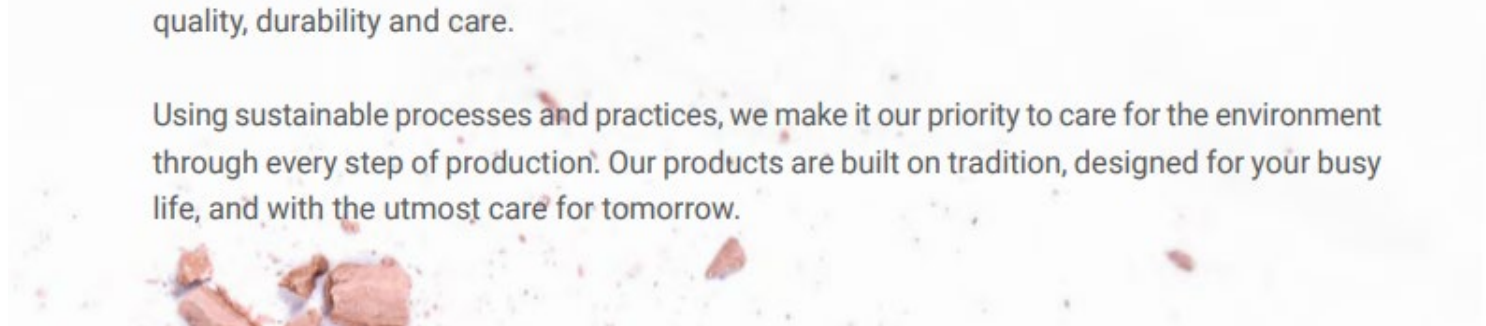
About Bocchi

With over 70 years of experience, BOCCHI is a leading brand in the kitchen and bathroom products industry. Since our establishment in 1950, the values of BOCCHI have never changed: creative and innovative excellence at every level, as well as care for people and for the environment.

Our mission has always been to offer our partners innovative, high-quality and creative solutions in products and services to provide a unique and valued experience.

Today, BOCCHI harmoniously brings together tradition and design, and proudly stands for quality, durability and care.

Using sustainable processes and practices, we make it our priority to care for the environment through every step of production. Our products are built on tradition, designed for your busy life, and with the utmost care for tomorrow.



Bocchi Fireclay

- Bocchi is the biggest exporter of fireclay sinks to the USA!

Fine Fireclay

BOCCHI brings back the ultimate material to your kitchen. Fireclay, a 100% natural and recyclable material, used by craftsmen for centuries to create timeless fixtures, has now returned to our kitchens. Due to the specialized manufacturing process, which includes firing in kilns up to 1,100 degrees Celsius, fireclay becomes one of the most durable materials used in today's kitchen sinks. Their specialized glaze coating that is fused with the fireclay body during firing gives fireclay sinks a non-porous, uniform surface which will not scratch, rust or stain over time.

Bocchi Fireclay Kitchen Sinks allow homeowners to compliment other furnishings and incorporate many different themes to showcase their creativity. Whether you are considering a Bocchi Farmhouse sink with its distinctive design and colour personality as the epicenter of your dream kitchen or selecting the timeless elegance of fireclay as an undermount or drop-in sink, Bocchi kitchen sinks are truly crafted to match your desires and style.



Bocchi Clean+ Technology
Developed to minimize lime remains, dirt and bacteria on ceramic surfaces



Bocchi Super Smooth Surface
Decreased roughness makes cleaning easier and leaves sink always shiny

Step Rim Design
A lowered, inner basin ledge to allow the integrated use of special designed accessories is available on select models

Beautiful & Functional Designs
Elegant, sophisticated and clean lines, apron-front, undermount, or drop-in styles; designed for traditional or contemporary kitchens with additional styles perfect for an easy remodel; every collection offers variety of widths, single or double bowl options

Sink Rack & Strainer
Each sink comes with a specially designed fitting sink rack

Bocchi Colors
Each sink is available in 16 exclusive colors

Environment Friendly
Bocchi sinks are made out of natural fireclay material and require less water to clean

Natural
Made out of Fine Fireclay, a 100% organic material

Integrated Step Rim Accessories
Cutting board and colanders specifically designed for Step Rim Farmhouse sinks to provide extra comfort and functionality



Impact-resistant
Extremely durable material resisting to impact



Heat Proof
Extreme heat from pots and pans or almost anything



Food-Safe
Absolutely safe for food, and safe for you



Stain-resistant
Food/drink stains cannot stick



Anti-splash
Apron-Front design protects your cabinets



Super Smooth Surface
19 times smoother than ordinary fireclay surface preventing dirt and bacteria to stick



Bocchi Clean Plus+
Easier to clean & stays clean longer

Bocchi Colours



White
Fireclay (001)



Matte White
Fireclay (002)



Matte Black
Fireclay (004)



Black
Fireclay (005)



Matte Gray
Fireclay (006)



Sapphire Blue
Fireclay (010)



Biscuit
Fireclay (014)



Matte Dark Gray
Fireclay (020)



Matte Brown
Fireclay (025)

*(XXX) refers to colour
reference

Types of Sinks

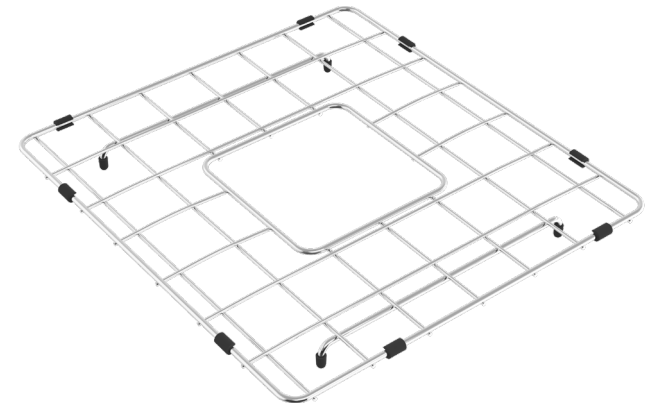
Belfast/Butler

Undermount/Inset

Apron Front Retro
Fit Butler Sinks

All sinks are
supplied with
basket strainer
wastes as required

All of our sinks
come with bottom
grids for extra
protection!





Belfast/Butler

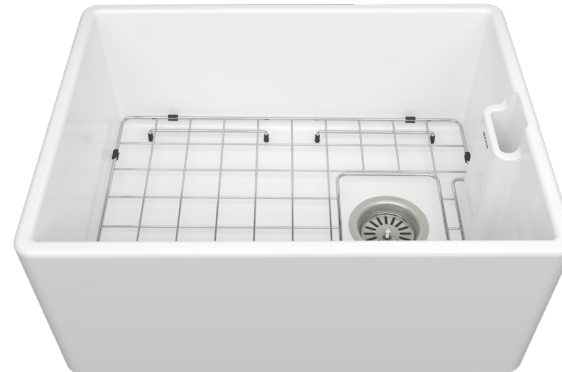
Belfast/Butler Sinks



1670-XXX-0126

Belfast T90

90mm Waste:



1296-XXX-0126

Belfast T60

60mm Waste:



1657-XXX-0140

Dora 60S

Modern edge, traditional apron-front design,
thinner walls creates deeper, more spacious bowl for
enhanced functionality

Belfast/Butler



1631-001-0140
Lusso 90D

Fits in 900mm cabinet. The
ultimate biggest sink

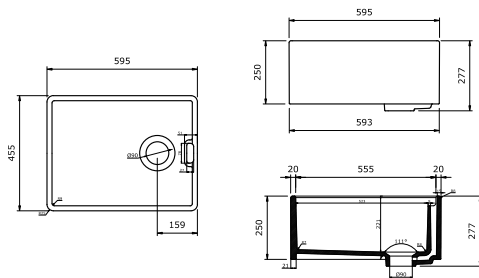


1658-001-0140
Arno 80D

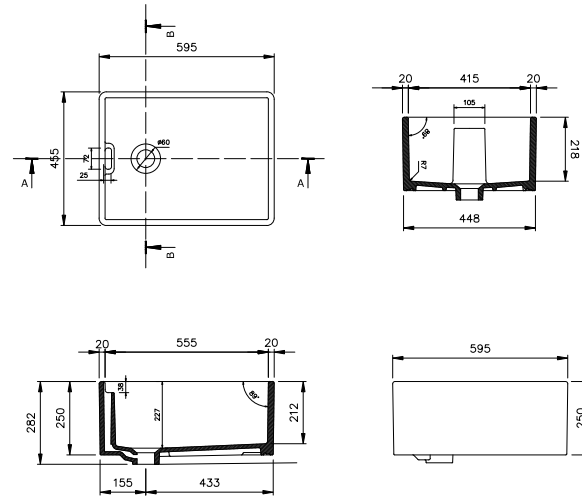
Fits in 800mm cabinet. Semi-
punched tap hole

Belfast/Butler Technical Drawings

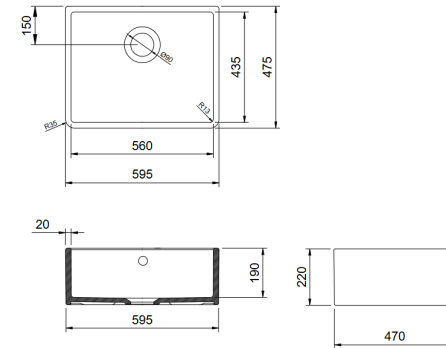
1670



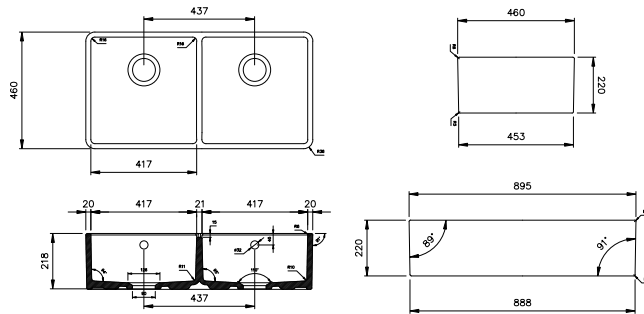
1296



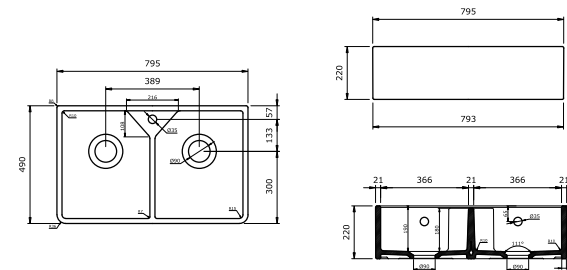
1657



1631



1658



Undermount/ Inset



Sotto 1636/39/86



1636-XXX-0141
Sotto 15D



1639-XXX-0141
Sotto 10S



1686-XXX-0141
Sotto 13D

★ This Sotto range is designed with versatile dimensions, allowing for flexible installation options including undermount, inset, and semi-reveal — making it ideal for a wide variety of kitchen styles and layouts

American Style Sotto

*range features deeper-than-average bowls,
inspired by American-style kitchen sinks,
offering increased capacity and a more
spacious, practical washing area

1358-XXX-0140



1359-XXX-0140



1627-XXX-0140



1361-XXX-0140



1360-XXX-0140

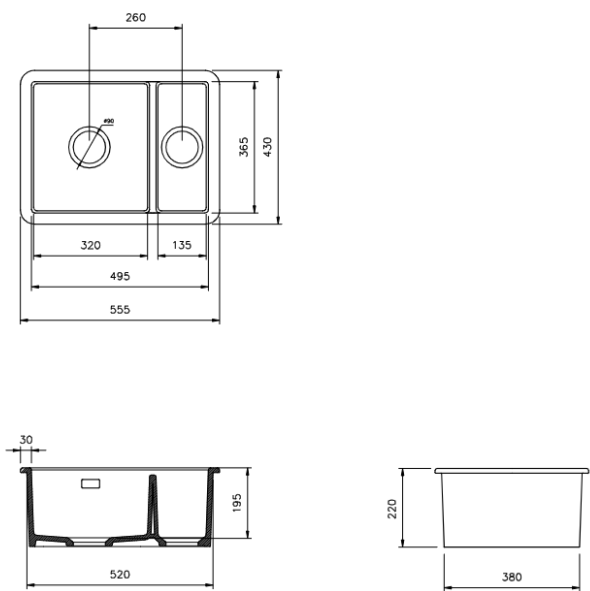


1362-XXX-0140

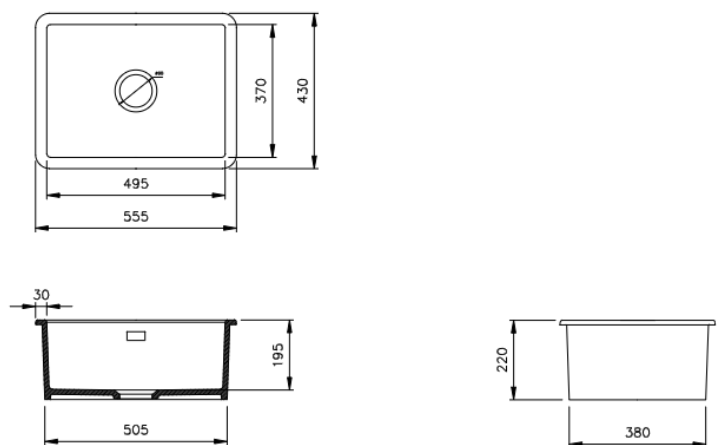


Technical Drawings

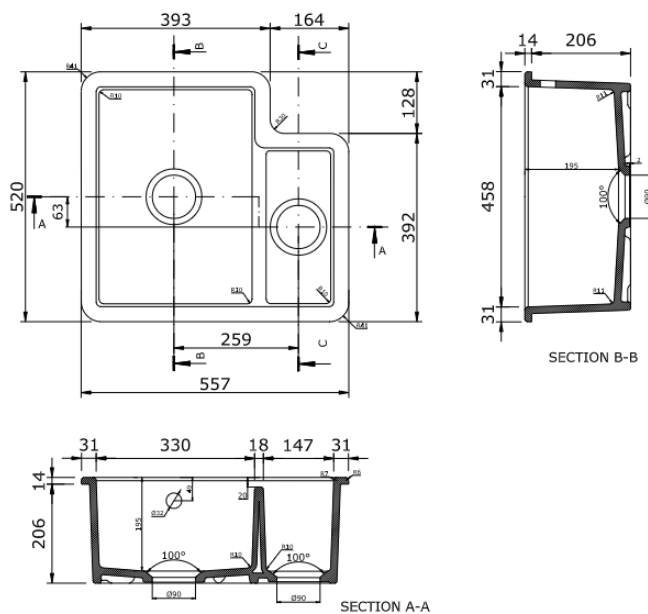
1636



1639

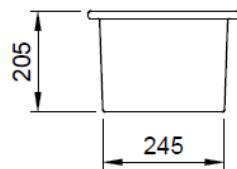
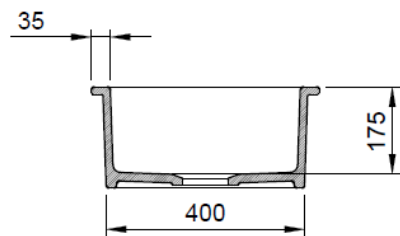
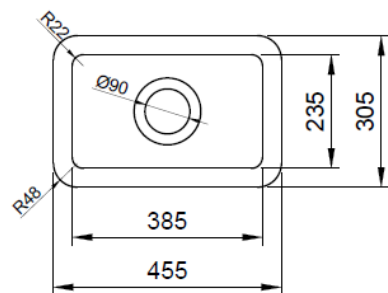


1686

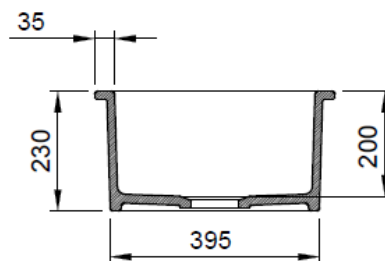
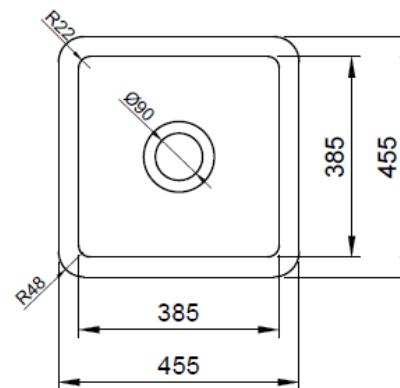


Technical Drawings

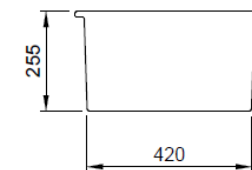
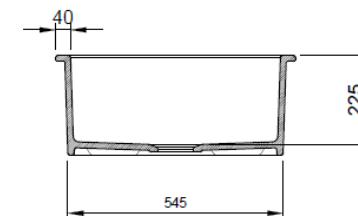
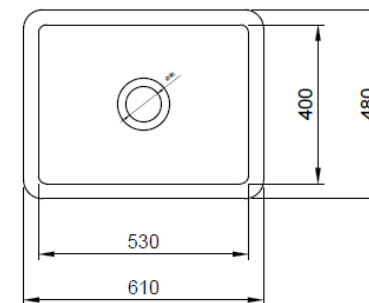
1358



1359

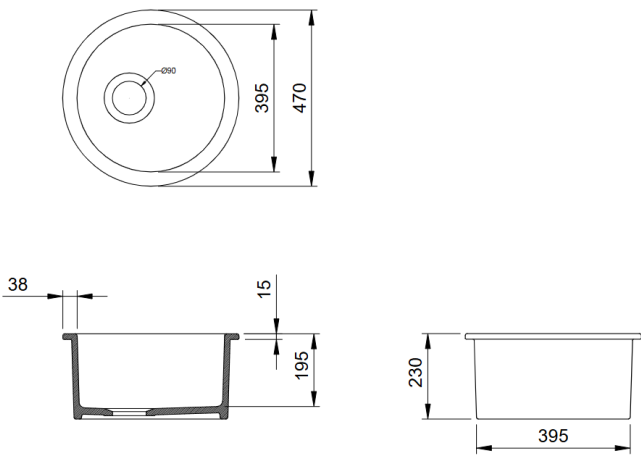


1627

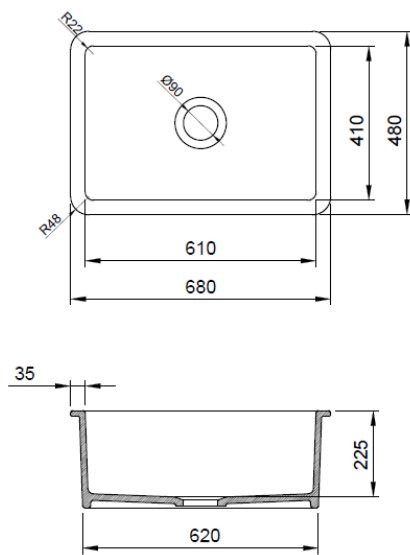


Technical Drawings

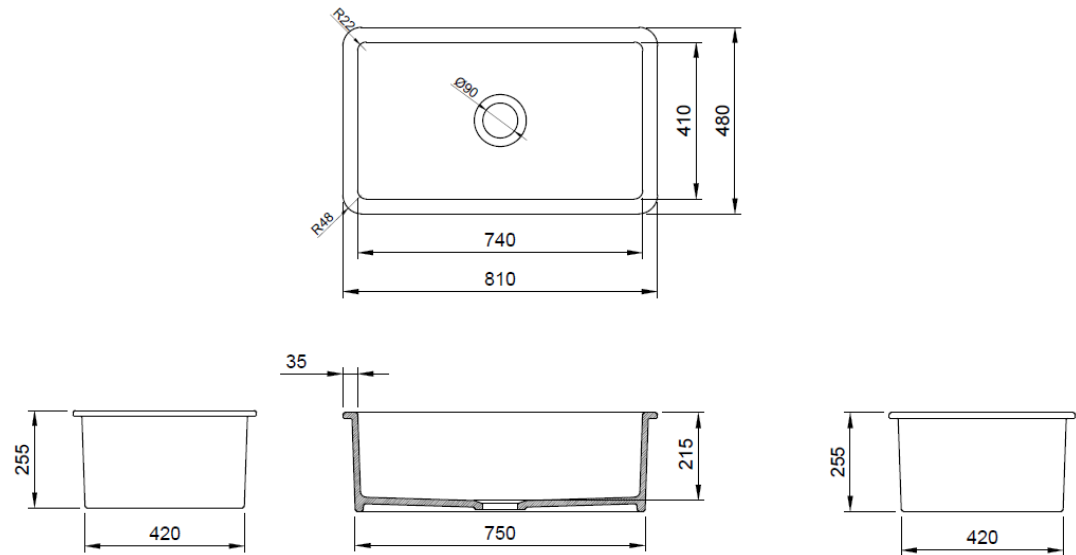
1361



1360



1362





Retro-Fit Butler Sinks

Retro-fit Butler Sinks



1582-XXX-0140
Domo 60S
*Fits 600mm Cabinet

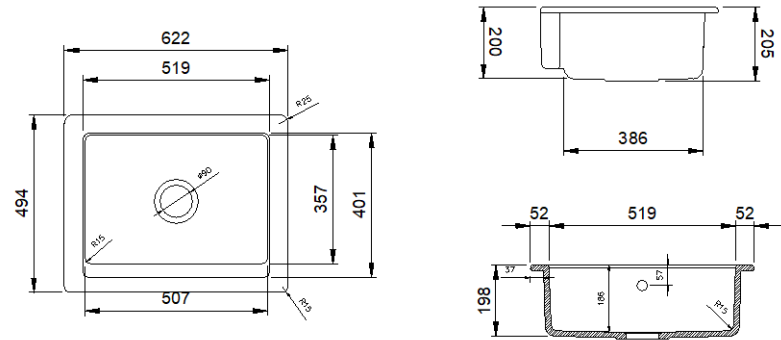


1590-XXX-0140
Domo 80D
*Fits 800mm Cabinet

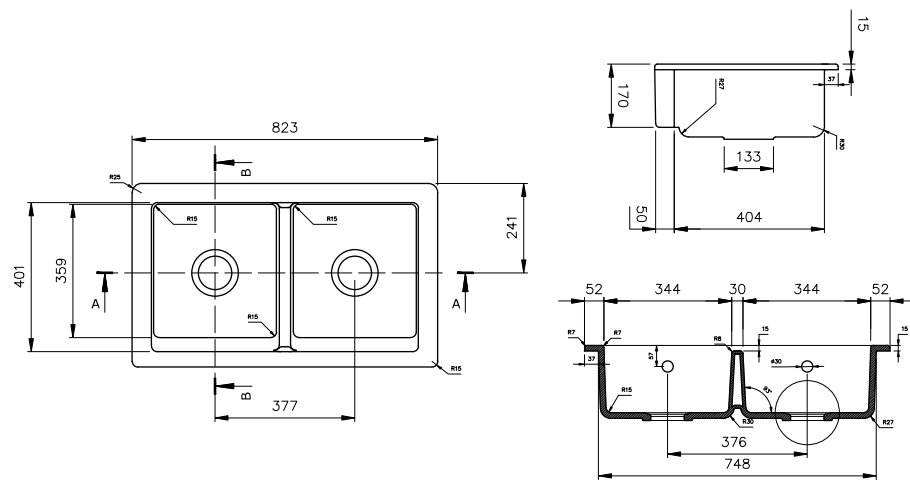
*Seamless installation. Retro fit available thanks to innovative technology

Technical Drawings Retro-fit Butler Sinks

1582



1590





2320 0003
Cutting Board (Mahogany)
Fits: 1359



2320 0005
Cutting Board (Mahogany)
Fits: 1600, 1606, 1634



2320 0007
Cutting Board (Mahogany)
Fits: 1633 (outer ledge / 2 required to cover sink)



2320 0009
Prep Board (Mahogany/SS)
with knife slots & colanders
Fits: 1344, 1348, 1360, 1362, 1504, 1505, 1627, 1628



2320 0011
Prep Board (Mahogany/SS) with
3 solid, round bowls
Fits: 1344, 1348, 1360, 1362, 1504, 1505, 1627, 1628



2320 0013
Prep Board (Mahogany/SS) with
3 solid, rectangular bowls
Fits: 1344, 1348, 1360, 1362, 1504, 1505, 1627, 1628



2320 0004
Cutting Board (Mahogany)
Fits: 1500, 1501, 1551, 1604



2320 0006
Cutting Board (Mahogany)
Fits: 1616, 1618, 1693, 1694, and inner
ledge for 1633 and 1695



2320 0008
Prep Board (Mahogany/SS)
with knife slots & colanders
Fits: 1616, 1618, 1693, 1694, and inner
ledge for 1633 and 1695



2320 0010
Prep Board (Mahogany/SS) with
3 solid, round bowls
Fits: 1616, 1618, 1693, 1694, and inner
ledge for 1633 and 1695



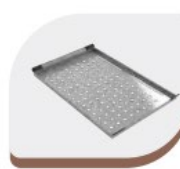
2320 0012
Prep Board (Mahogany/SS) with
3 solid, rectangular bowls
Fits: 1616, 1618, 1693, 1694, and inner
ledge for 1633 and 1695



2320 0014
1 board + 2 bowls
(one solid and one colander)
Prep Board (Mahogany/SS) with
1 board and large colander and
large mixing bowl
Fits: 1616, 1618, 1693, 1694, and inner
ledge for 1633 and 1695



2310 0003
Colander (Mahogany/SS)
Fits: 1344, 1348, 1360, 1362, 1504, 1505, 1627, 1628



2310 0005
Colander Tray (Silicone/SS)
Fits: 1344, 1348, 1360, 1362, 1504, 1505, 1627, 1628, or (upper
level only with semi-reveal install)
1693 & 1694



2310 0007
Colander (Mahogany/SS)
Fits: 1616, 1618, 1693, 1694, and inner
ledge for 1633 and 1695



2320 0001
Cutting Board (Mahogany)
Fits: 1344, 1348, 1360, 1362, 1504, 1505, 1627, 1628, or (upper
level only with semi-reveal install)
1693 & 1694



2310 0004
Colander (Silicone/SS)
Fits: 1600, 1606, 1608, 1634



2310 0006
Expandable Colander (Plastic/SS)
Fits: 1136, 1137, 1138, 1139, 1344, 1348, 1359, 1360, 1362, 1481, 1504, 1505, 1600, 1602, 1604, 1606, 1608, 1616, 1618, 1627, 1628, 1634, 1635, 1693, 1694, and inner ledge on 1633 and 1695



2310 0008
Colander (Mahogany/SS)
Fits: 1500, 1501, 1551, 1604



2320 0019
Cutting Board (Mahogany)
Fits: 1695
(outer ledge/2 required to cover sink)

Accessories

*Manufactured by us

Upcoming 2025 Launches



Workstation Sinks

- * Innovative Step Rim Technology for use with accessories
- * Accessories are included
- * Bottom Grid and Basket Strainer Waste are included



1718-XXX-0140
Contempo 60SE



1719-XXX-0140
Contempo 80SE



1720-XXX-0140
Contempo 80DE



1689-XXX-0140
Contempo 60S

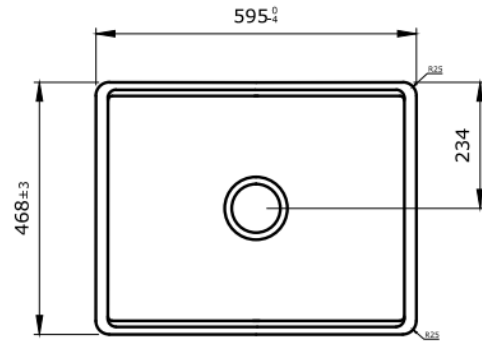


1690-XXX-0140
Contempo 80S

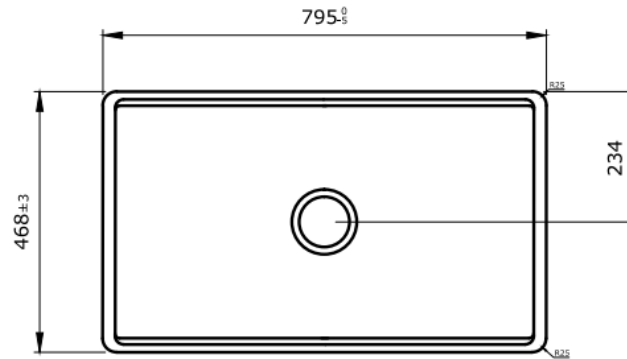


1691-XXX-0140
Contempo 80D

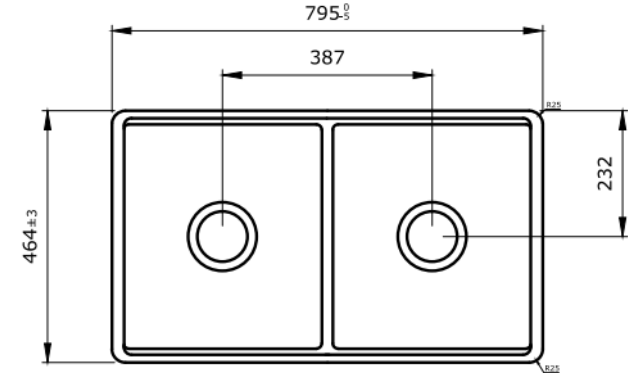
Technical Drawings



1689/1718



1690/1719



1691/1720

Fluted Apron-Front Kitchen Sinks



1603-XXX-0140
Lavello 50S



1099-XXX-0140
Lavello 60S

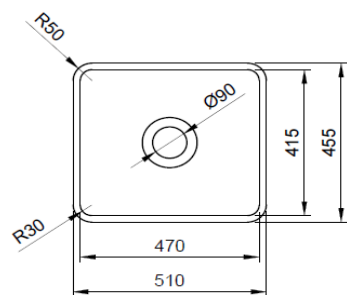


1602-XXX-0140
Lavello 75S

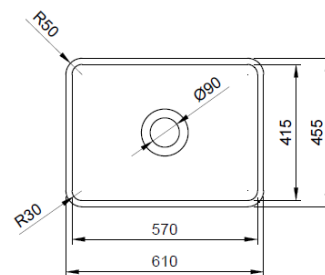
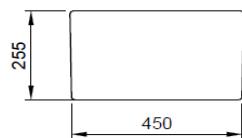
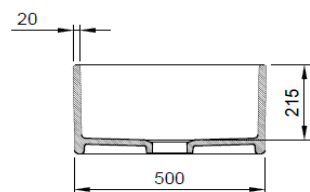


1601-XXX-0140
Lavello 80D

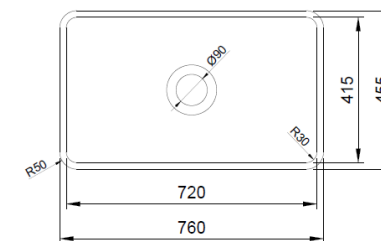
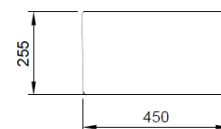
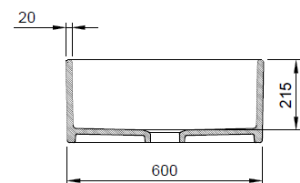
Technical Drawings



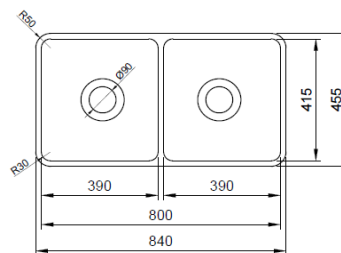
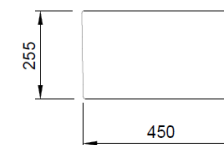
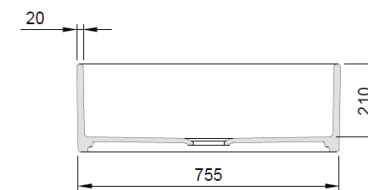
1603



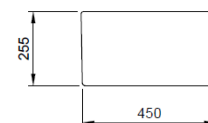
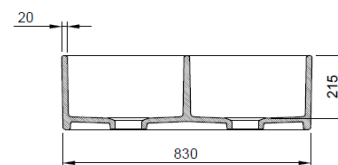
1099



1602



1601



Butler Sinks/Panor



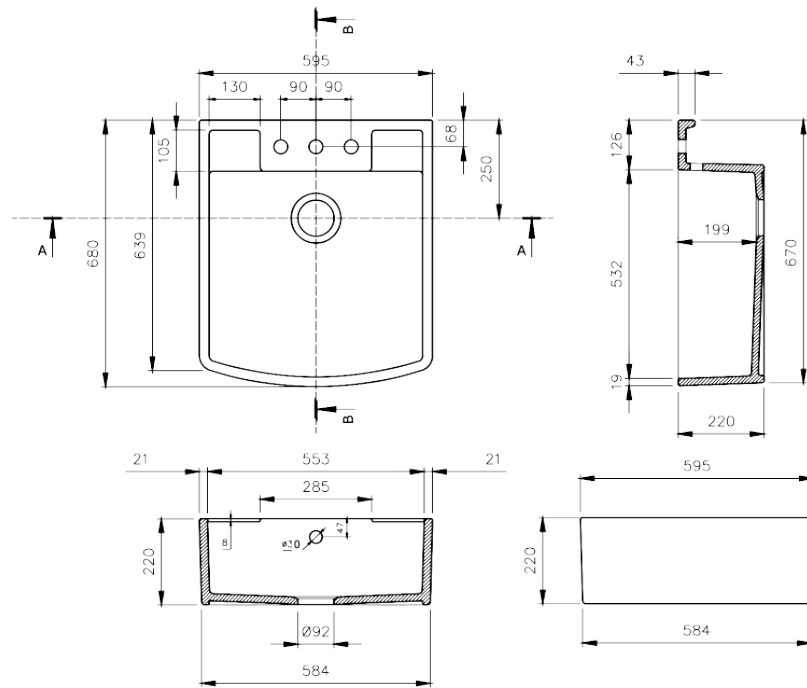
1220-XXX-0126
Sicilly 60S



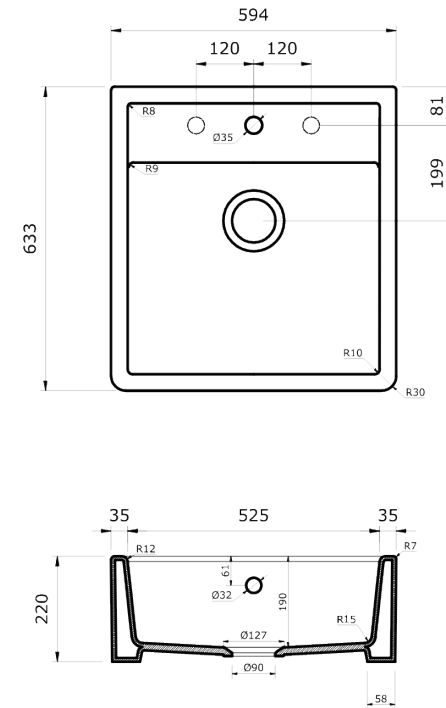
1659-XXX-0126
Marano 60S

Technical Drawings

1220



1659





BOCCHI UK

Unit 6, Sundon Business Park,
Dencora Way



Luton
Bedfordshire
LU3 3HP
United Kingdom



+44 (0) 158 2373 688

contact@bocchiuk.co.uk