

Autumn & Winter 2024/2025

# Luxury Bedroom Brochure



KBB House,  
Inveresk Industrial Estate,  
Musselburgh, Midlothian,  
EH21 7UL



## Contents

Introduction	04 - 05
Meet the team	06 - 09
Our bedroom projects	10 - 59
Daval Furniture	60 - 69
Hepplewhite Furniture	70 - 79
Sliding wardrobes	80 - 85
Walk-in wardrobes	86 - 93
Awkward spaces	94 - 95
Other spaces	96 - 103
Let's design together	104 - 105

# Bedrooms by people that care

We've earned an impeccable reputation over the last 30+ years.

As one of the very few independent bedroom specialists we believe in doing things properly. That's providing high-quality bedrooms, wardrobes and living spaces, all with a reliable and personal service.

From the moment you walk through our doors to the final clean-up by our own superb in-house installation teams you'll always be in good hands.



# Your designers

## Meet our showroom team

We genuinely care about our customers. From our highly talented designers to our vastly experienced administrators, we dedicate the necessary time and attention to each and every one of our customers. We really do provide that personal touch.



Gordon

Gordon is our director. He has instilled his values throughout the business: honesty, integrity and genuinely caring about clients. With his wealth of knowledge, he ensures your whole project runs smoothly and the outcome is impeccable.



David

David has been designing luxury bedrooms with KBB from the very start over 30 years ago, so it's fair to say he's probably one of the most experienced bedroom designers in the country, a true perfectionist.

# Meet our installation teams

We don't use subcontracted fitters.

Instead, we employ our own team of highly trained individuals to ensure your project is executed to the highest standards and in-line with your carefully planned schedule.



Allan



Innes



Simon



Owen



Shaun



Steve



## Our Bedroom Projects

Take a look through some stunning projects showcasing beautiful bedrooms, highlighting our eye for design and detail.

Each of the bedrooms we create are individually designed to suit our customer's space.

We have many happy customers across Edinburgh, Lothians and Borders.



Cottage Master Bedroom



Such a cosy cocoon of a bedroom within an old cottage nestled in the hills just outside Edinburgh. Custom floor-to-ceiling fine-grained wardrobes with luxurious LED lit interiors and a central open shelved bedhead arrangement provide a stunning backdrop for a grand super king-sized bed.

Bronze lustre bedside cabinets and sleek dressing table are a sumptuous contrast to the wood-grain. Silky carpet and colourful soft furnishing are the finishing touches. Who wouldn't want to wake up in a room like this?





Cottage Guest Bedroom



A guest bedroom that feels like a master bedroom. We designed this room to ensure it had everything. Stunning full-height wardrobes to suit the cross-ceiling beams, a bespoke dressing area, feature bed wall with LED back lit shelves and an area at the window for a seat which also doubles up as a lift-up linen bin. Bedside cabinets and open shelves all in Marine Blue added a pop of colour and that wow factor. A beautiful space.



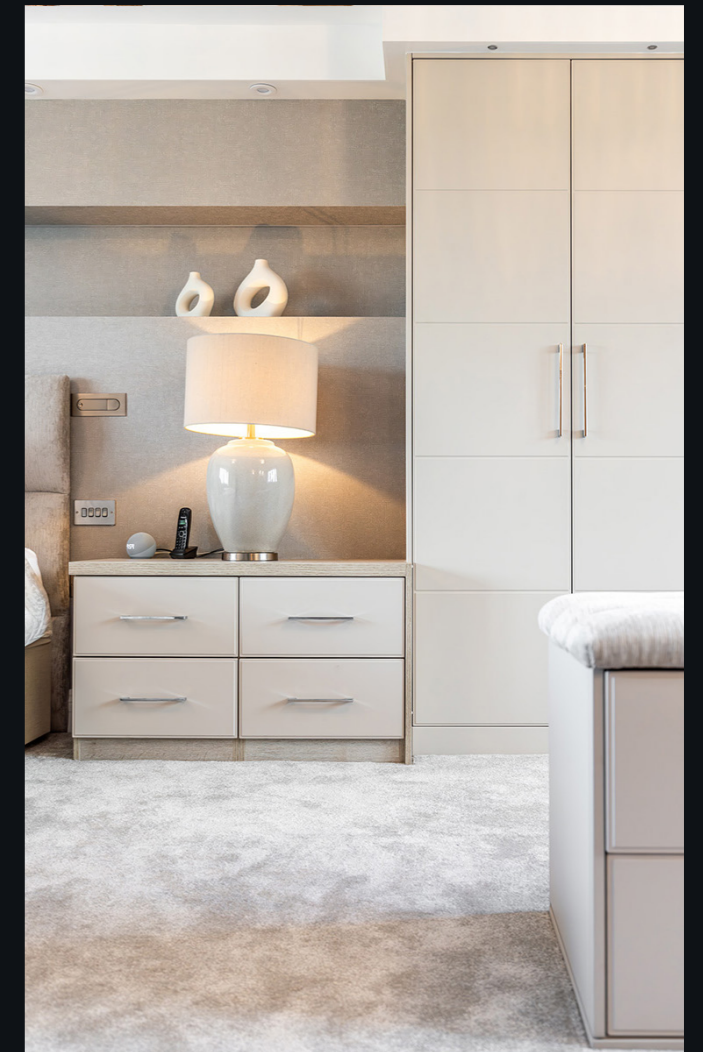




Borders Bedroom



Stunning designer bedroom suite that redefines stylish living. A fully fitted wardrobe at the bed area offers a blend of hanging & ample drawer space, further complemented by a separate luxurious walk-in wardrobe with central seating area containing drawers below. A beautiful dresser section adds elegance and thoughtfully placed lighting elements highlight every detail.





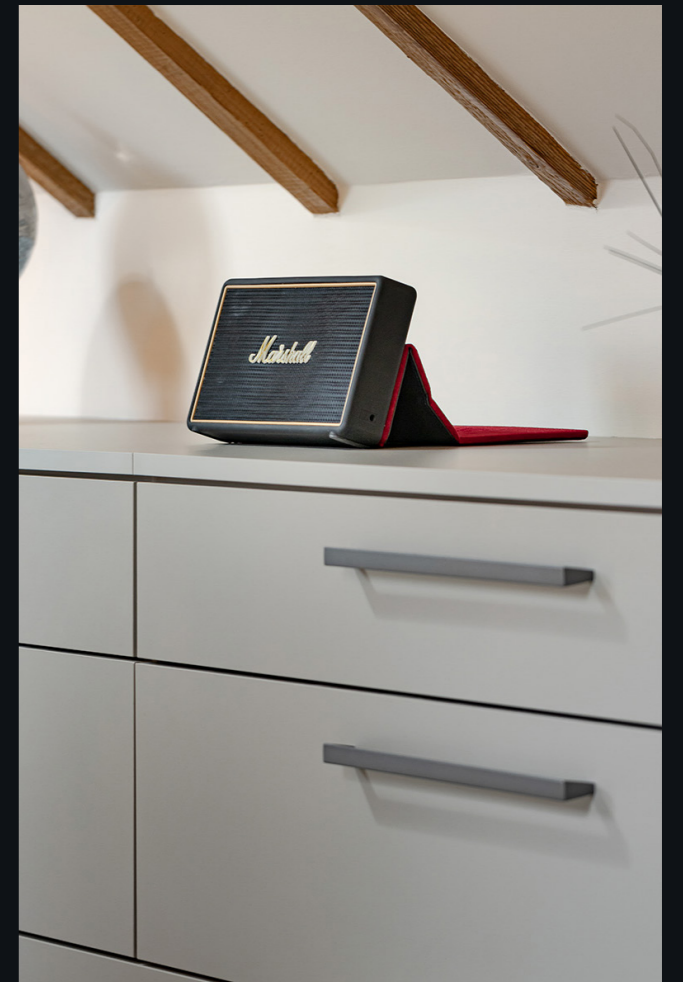
Country Attic Bedroom



Attic bedrooms with deep coombes are so difficult to get just right, unless you're The KBB Company, of course! The bed wall is drop dead gorgeous with a low-slung purpose-built bed base and matching bedhead arrangement. We've illuminated the open niches and added uplighting onto the 'V' lined wall wrapped around a chimney breast.

The wardrobe run is truly bespoke with a four leaf angled door set up concealing tailored illuminated interiors. The sweeping dressing table run, TV wall and feature open-shelf units at the stairwell finish the room perfectly.





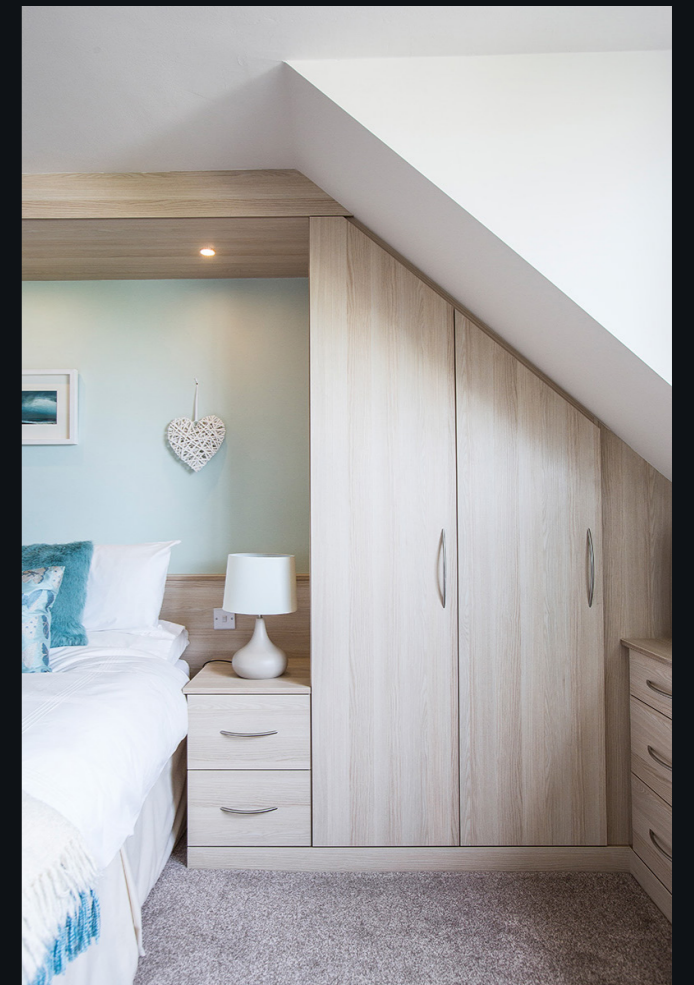


South Queensferry Bedroom

A designer bedroom suite with angled hinged doors for the tricky coombes that most designers dread, but not us.

We've included a matching header with feature lighting, bedside drawers, large dresser area and a bespoke three-mirror door sliding system giving storage and reflection making this beautiful room look even bigger for that light and airy feel with all the practicality.







Temple Bedroom



In a traditional room sometimes you just can't beat a flowing run of wardrobes in crisp white.

Maximum storage was critical for our client so we designed a combination of hanging, shelves and drawers, the added white frosted glass doors in the centre of the run were a nice touch to soften the look.







Longniddry Bedroom



A complete bedroom suite installed into those awkward angled coomb areas. Always a lot more thought required at the design stage but so worth it with the end result.

Here we designed a combination of hinged bespoke wardrobes, mid height cabinetry, bedside units and a window seat to ensure as much storage as possible with style. All in white slab doors with walnut accents for a stunning finish.







Stockbridge Bedrooms



A traditional Edinburgh stone-built mews conversion with lots of windows and doors called for some clever thinking to combine smaller spaces with that designer look.

Half-height hanging, drawers and full-length mirror worked perfectly in one room. The other room was fitted with a double-door wardrobe and end angled mirror wardrobe, chest of drawers & matching mirror above. The results were beautifully finished spaces that perfectly blended style and functionality.







Our supply partner:

**daval** 

We've been proudly partnered with Daval for decades.

Daval is a British, family-run company that was born out of passion for crafting exquisite, made-to-measure bedrooms and cabinetry for beautiful homes.

When it comes to quality, only the very best will do.











Our supply partner:

***Hepplewhite***<sup>®</sup>

Hepplewhite fitted furniture speaks for itself- stylish, elegant and individual.

We've built an impressive reputation on designing and installing these beautiful wardrobes.









# Sliding Wardrobes

We've designed & installed thousands of sliding wardrobes over the years.

Our clever, sliding wardrobes can really maximise your bedroom, opening up space that wasn't available before.

With a sleek finish and high-quality components, our sliding doors glide effortlessly for a truly luxurious feel.









## Walk-in Wardrobes

Not as expensive as you might think.

Removing wardrobe doors actually reduces costs making walk-ins and dressing rooms a lavish yet affordable option.

We'll design your space exactly how you want it, either kept simple or you can go all the way with stacks of custom storage, luxurious finishes and integrated lighting.





FRANCOIS TRUFFAT The Complete Films  
WOMAN ONLY STEFAN MAY  
BAUHAUS



Think you don't have the space for a walk-in wardrobe? A smart solution is to section off part of a room. We've done this for many clients, and they absolutely love the walk-in wardrobe they never thought possible.



# Awkward spaces

We've been beautifully installing bespoke wardrobes into sloping ceilings, under eaves and into unusual angles for many years, it's our speciality we love the challenge!



## Other spaces

Our expertise doesn't stop at wardrobes. Our talented designers and fitters love bringing life to other areas of the home too.

- Home offices
- Living areas
- Media walls
- Bespoke storage

No matter the project, you can expect our bespoke service and very high-standards.









# Let's create a design

Visit our showroom for a chat. We'd love to get an understanding of your tastes, preferences, budget and how you intend to use your space. As well as your wish list if you have one. Using this information, we can create a stunning bedroom design together.

Our design studio is located in Musselburgh:

KBB House,  
Inveresk Industrial Estate,  
Musselburgh, Midlothian,  
EH21 7UL

To book your visit please visit: [www.thekbbcompany.co.uk](http://www.thekbbcompany.co.uk) or call 0131 608 2101.





0131 608 2101

[www.thekbbcompany.co.uk](http://www.thekbbcompany.co.uk)