



**Urban**  
myth®

Our  
Collections

## Why choose Urban Myth as your kitchen or bedroom design partner?

- **Decades of Experience:** With over 35 years of trading, our team brings a wealth of knowledge and reliability to every project.
- **Collaborative Approach:** Our team takes the time to understand your needs, ensuring a design tailored to your lifestyle and family.
- **In-House Manufacturing:** We produce a complete range of competitively priced kitchens and bedrooms in our Essex factory.
- **High-Quality Materials:** We use only the best materials to produce durable, beautiful furniture.
- **Quality Guarantee:** Our KBSA membership ensures superior service, design, and installation standards with a 6 year guarantee on furniture.
- **Seamless Process:** We are dedicated to making your kitchen or bedroom renovation stress-free with expert support throughout.



# Our award winning service



## consultation

We offer a free design consultation at our showroom giving you the opportunity to experience the quality of the finishes and features available and with your designer you can talk through possible layouts and create your ideal wish list.



## design

Our collaborative design approach maximises creativity and our team will produce a design that is perfect for you. Along with your quote a visual will be created so that you can see what your room will look like in real life and then, working closely with you, we fine-tune this design to create your perfect space.



## manufacture

We're proud to offer a complete kitchen furniture range, manufactured in our own factory in Essex. The Urban Life range has a wide range of colour and finish options using only the best materials to produce beautiful, long-lasting furniture that can be enjoyed for many years to come.



## project management

Your project manager will oversee every aspect of the delivery and installation of your kitchen or bedroom, they will provide a detailed site pack for all relevant tradespeople and make several visits to check work is being completed to plan and resolve any issues.



## installation

Our in-house team of experienced professional installers have in-depth knowledge of all our products and appliances and take pride in consistently, skilfully and efficiently fitting our kitchens and bedrooms with the least amount of disruption to your home.

## aftercare

We commission all appliances that we have supplied and provide a digital folder that includes all user manuals and appliance serial numbers. Our aftercare team are available to help with any questions or concerns you have about your new kitchen or appliances.



## ongoing support

Additionally, to ensure that you are as comfortable in your new kitchen as you were in your last we can arrange for our specialist home economist, who has knowledge of all the leading brands, to visit your home and run through how to use all your new appliances.





## Contents

6 steps to your dream kitchen	6
Design inspiration	10
Dark & Dramatic	13
Cool & Neutral	36
Colour & Texture	52
Rustic & Industrial	76
Bedrooms & Dressing Rooms	88
Our Partners	106
KBSA Membership	108
Sustainability	110

# 6 simple steps to your dream kitchen

1

## consultation

Your designer will guide you through our showroom, showcasing the quality of finishes and features. You can discuss possible layouts and create your ideal wish list.

2

## design

We will create a detailed plan, and quotation for your kitchen. We will present and discuss these ideas with you in detail. After this, we trust you'll be satisfied and instruct us to proceed.

3

## home survey

Once you've approved your quote, we will request a deposit, fully protected under the KBSA and Trustmark insurance scheme. We will arrange a home survey by your project manager to measure your space.

4

## your order

Your kitchen will be made to order at our Essex factory we will manage the ordering, delivery, and installation of appliances, worktops, and glass to align with the schedule.

5

## installation

Your project manager will check services and dimensions at various stages during installation, which is carried out by our own team of fitters, and will ensure everything is completed to your satisfaction.

6

## completion

We commission all supplied appliances and provide a digital folder with essential information. Our aftercare team is just a phone call away for any questions.

Design inspiration from  
our recent projects





## Dark & Dramatic

Handleless Vertical Grain Shadow Black/ Planet Pluto Quartz





Matt Indigo Blue, Brass handles / Calacatta Magnifico Quartz, Smoke Grey mirror





Cosmo Grey & Halifax Oak/ Marazzi Marble Look Calacatta



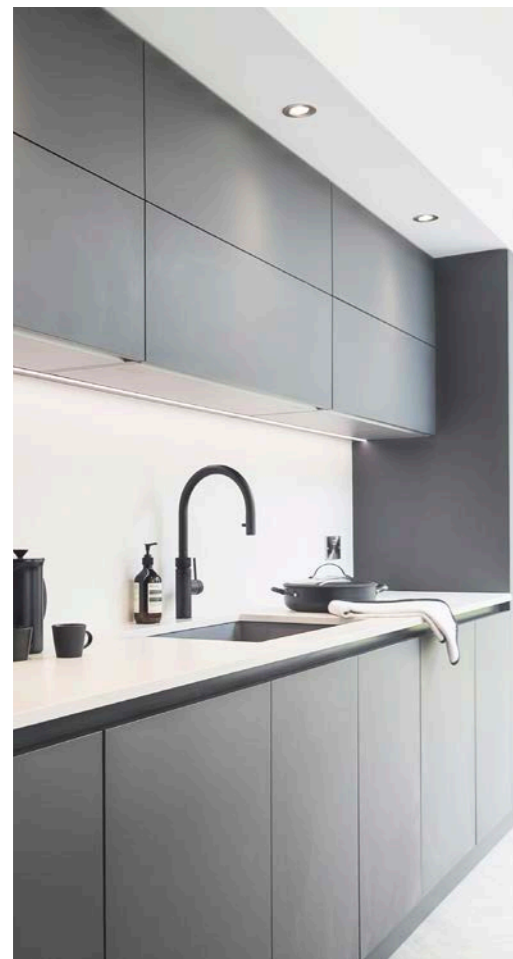


Matt Black & Halifax Pewter Oak with Pocket Door / Fusion Black Natural Granite



Supermatt Cosmo Grey/ Valley White Veluto and Tartufo Quartz







Titanium & Iron Lacquer, Grooved Charcoal Oak / Flamed Pietra Fossena Stone



## Cool & Neutral

Matt Cashmere & Walnut Pantry Interior/ Quartzforms Planet Mars







Pedini Aroma Thermostructured Grey and Walnut Veneer / Bianco Statuturio Venato Marble





Light Grey & Lava Grey Handleless Shaker/Brilliant Ice Quartz





Supermatt Cashmere and Marshwood "on track" /Composite Stone in Vena Aurum



## Colour & Texture

Matt Kombu Green with Brushed Bronze Slim Handles/ Compac Unique Callacatta Quartz







Maya Bronze / Sintered Stone worktop and upstand



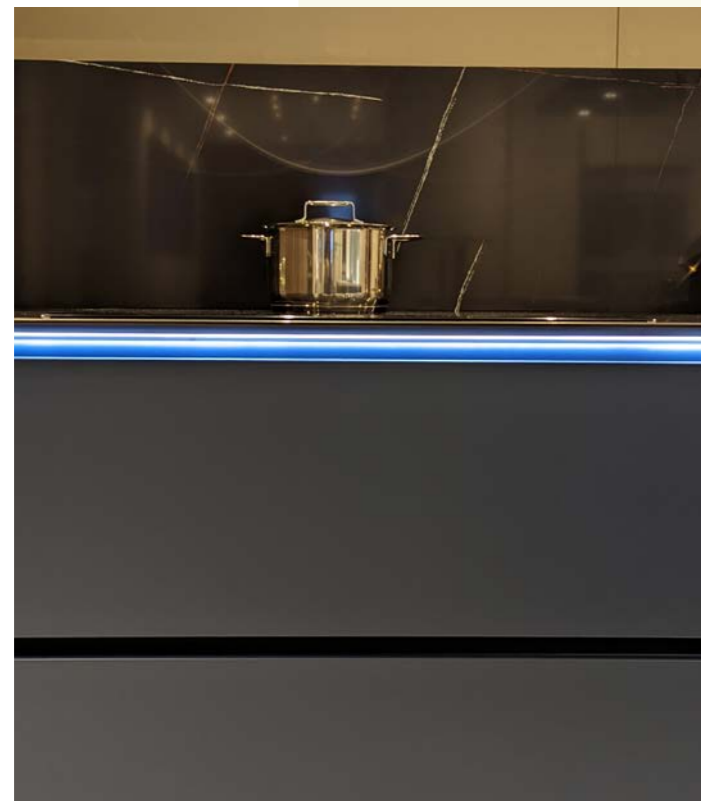


Highland Green Shaker Kitchen with brushed Nickel cup handles and knobs





Ocean Blue & Walnut Laminate / Quartzforms Planet Halley



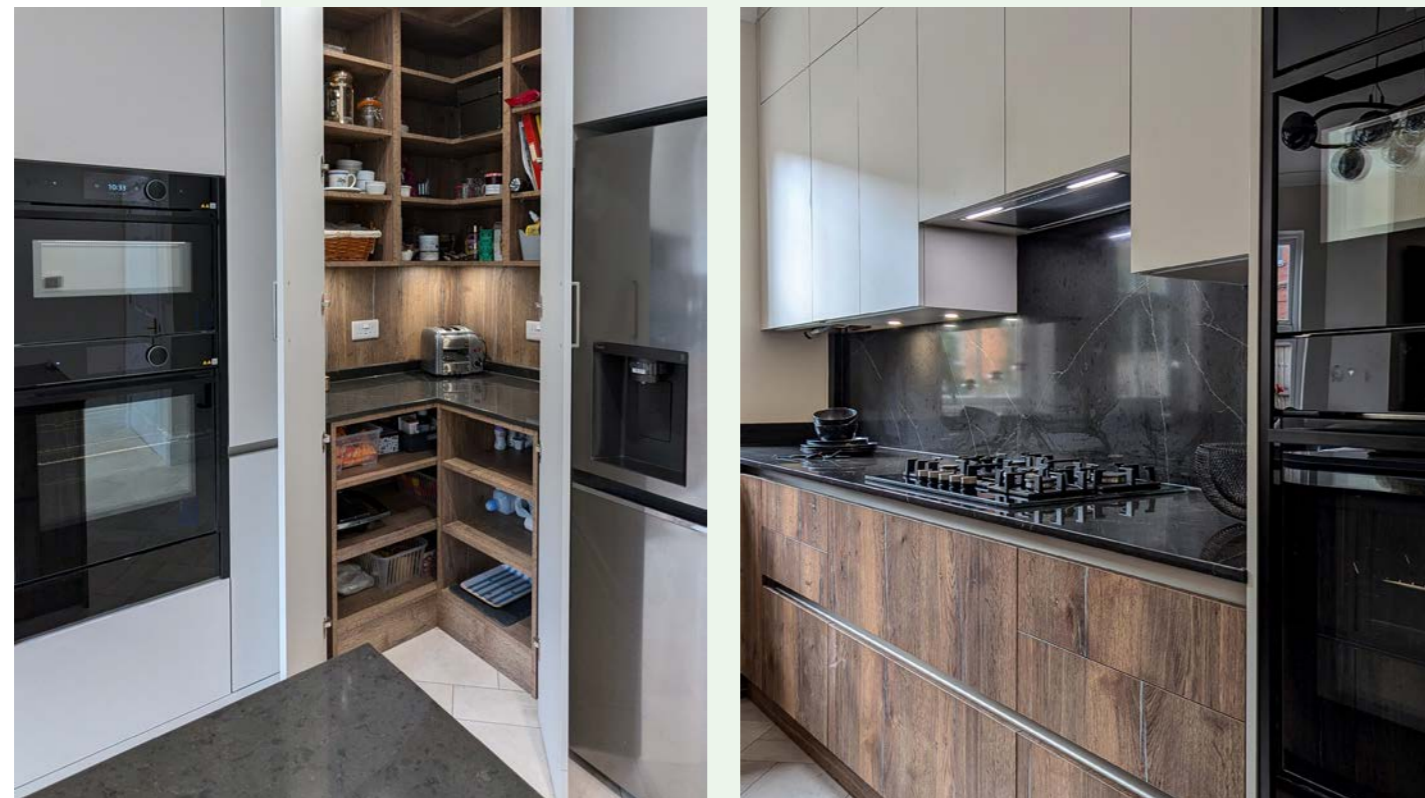


Concrete Flow and Halifax Pewter Oak with Bronze Channel / Cosmic Black Titanium Granite





Matt Taupe & Halifax Pewter Oak/Quartz worktop in Planet Jupiter & Vena Aurum



## Rustic & Industrial

Light Grey & Halifax Oak / Carrera Misterio Quartz







Graphite & Halifax Pewter Oak /Unistone Quartz Concreto & Tartufo





Matt Cashmere with Aluminium Channel Handle. Bespoke storage seats/ Quartz polished Cendre





## Bedrooms & Dressing Rooms

Graham & Brown "Bluebird" painted Shaker with mirror fretwork, Brass Fluted Pull Knob





White Supermatt with recessed handles and pull out bed frame





Supermatt Light Grey & Native Pink with recessed handles





Limette Laminated Doors with Henley Polished Brass Handles





Full range of Salice accesories to optimise space and deliver the perfect arrangement of wardrobe interior fittings



## Our Partners

We have excellent relationships with all the leading brands to enhance your kitchen or bedroom. We can also source materials and appliances should you have a specific request.

 **BORA**

 **NEFF**

**FISHER & PAYKEL**

**BLANCO**

**GAGGENAU**

DuPont™  
**CORIAN®**

**Quooker®**

**SUB#ZERO**

**WOLF**

**Miele**

 **smeg**

 **SILESTONE®**

**SIEMENS**



## KBSA Membership

As a Kbsa member we follow an Approved Code of Conduct and are subject to strict monitoring to make sure you get the best professional service available. In addition, we are approved to trade as a TrustMark accredited retailer giving you peace of mind.

### Why Choose a KBSA approved retailer?

**Design** - A personal design service offering innovative design advice to perfectly complement your home.

**Confidence** - Excellent value for money with plans and prices agreed in advance.

**Installation** - Installation by fully qualified specialists, with everything arranged for you.

**Satisfaction** - The whole job completed on time and on budget, leaving you with the reassurance that the after sales team will take care of you when your project is complete.



### KBSA Customer Charter

Our members have a showroom so customers can see their craftsmanship on display, helping them make their choice.

The information, drawings, plans, illustrations and quotations of Kbsa members will all be noted in detail, so there are no areas of confusion or contention.

Kbsa members work with you to stay on time and budget. They offer ongoing support and deal with any issues professionally.

Kbsa members communicate with you throughout the process, project planning each project to ensure their customers have complete peace of mind and achieve the quality design and results you are looking for.

### KBSA Consumer Plus Insurance

The ConsumerCare Plus Insurance scheme provides insurance protection as part of any domestic kitchen, bedroom or home office installation.

Under the terms of ConsumerCare Plus Insurance, customers are provided with insurance cover to protect them in the event of the retail member ceasing to trade due to insolvency.

Please enquire for further detailed information.





## Sustainability

We recognise that the products and services we supply have an impact on the environment and wellbeing of others and we have a responsibility to run our business in a sustainable way.

As one of the UK's leading privately owned interior design and manufacturing companies we recognise that in creating and manufacturing our products we use a large volume of resources and we are committed to ensuring that our social, environmental, and economic impact remains sustainable for the benefit of our community and the planet.

Our kitchens and bedrooms have always been manufactured and installed to the highest quality using materials from the leading suppliers and we would expect that with the right care they will last over 15 years or more, in fact we have installed kitchens over 20 years ago that are still going strong.

We are determined to deliver long term value for money for the company, our customers and stakeholders whilst reducing our impact on the environment. With our own factory based in Essex our Urban Life product is only manufactured in one location of which we have total control, we do not store kitchens but produce kitchens as they are ordered, and we have always remained ahead of the curve in terms of introducing technology into our manufacturing process that reduces waste and increases efficiency.

"Our approach has always been 'to do the right thing' and sustainability has to be at the heart of every decision we make."

Kevin Bunce,  
Managing Director

### Sustainable Procurement

As a business we have always been careful who we work with, selecting our suppliers based on quality and integrity. Our partners share our values, and we have confidence over where our raw materials come from and how they're made.

### Energy

As a manufacturer we use a large amount of energy to create our product. Our goal is to minimise our impact on the environment by reducing this energy usage.

### Waste Management

We aim to use fewer and more sustainable resources and reduce waste across all our sites and where possible enhance the positive contributions we can make.

### Responsible Business

We are proud of the people that make Urban Myth the company it is, and we want to create a work environment that attracts and retains talent from all backgrounds



[www.urbanmyth.net](http://www.urbanmyth.net)

0208 531 3413